

Introduction and Scene Setting
Policy and Scenario training exercises
RAPIDC – Malé Convention Workshop

UNEP RRCAP, Bangkok, 26 Feb to 2 March
2007

Philip Peck & Lars Strupeit

28.02.2007

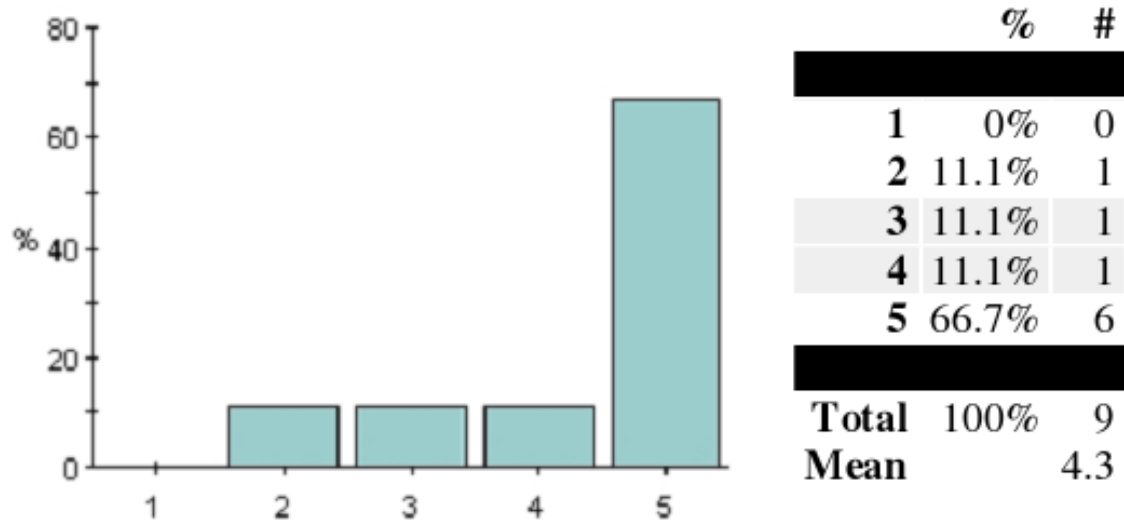
Outline

- Feedback and directions
- Progress and plans – policy casebook
- Progress and plans – scenario manual
- Activities for 28 Feb and 1 March.

Feedback obtained after the July 2006 workshop - scenarios

- Scenario Development: About which topics would you like to learn more to support your professional work?

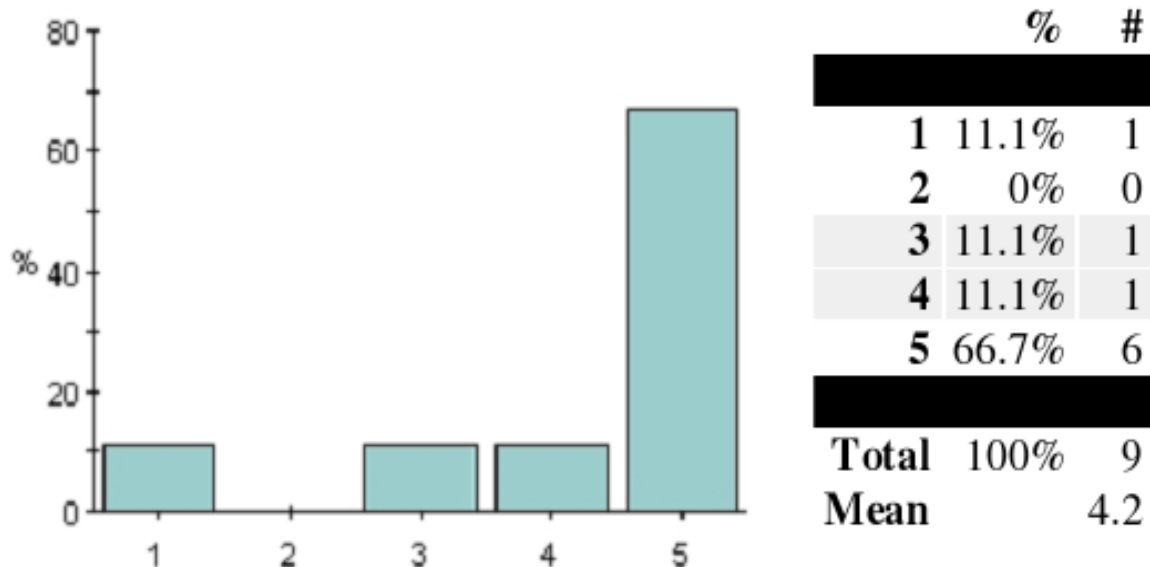
How to conduct an Emission Scenario



Feedback obtained after the July 2006 workshop - scenarios

- Scenario Development: About which topics would you like to learn more to support your professional work?

Tools and modeling approaches for emission scenarios



Emission scenario work for the Malé countries in participants' work environment

The following areas were considered as most relevant:

- *scientific assessment,*
- (2) *public policy making,*
- (3) *public policy planning,*
- (4) *education,*
- (5) *learning and capacity building.*
- Other areas like *moralizing* and *strategic planning* received a lower priority in the assessment questionnaire.

Audience for emission scenarios

Workshop participants considered *experts in governmental agencies in the Malé countries, governmental staff in neighbouring countries/the region, and especially the International Community (e.g. UNEP, WHO, Worldbank, NGOs etc.)* as the most relevant groups.

Other groups like *top-level politicians, the media and the general public* were considered to be less relevant audience groups for emission scenarios.

Need for emission scenarios in the participants' specific professional work environment

Emission scenarios were considered as particularly useful for:

evaluating the environmental and health consequences of intervention futures and for

describing possible emission reductions for different countries and regions.

Training sessions on policy instruments

Training sessions on policy instruments received a more mixed response than the sessions on scenario development.

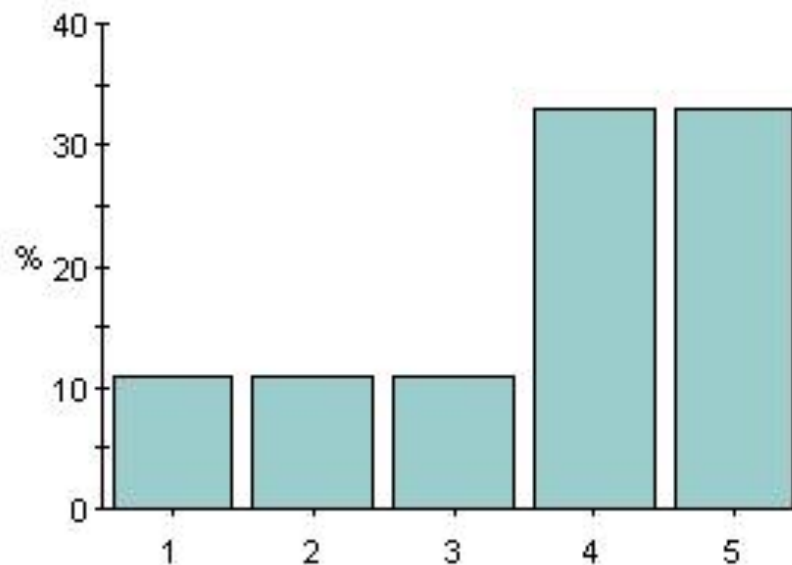
In particular:

- *The policy instruments that are available and how they work in general terms*
- *Criteria for evaluating the effectiveness and/ or efficiency of environmental policies*
- *The general context of the Malé countries (and other developing countries) when considering policy development*

Feedback obtained after the July 2006 workshop - policy

- Policy: About which topics would you like to learn more to support your professional work?

Command and control policy theory

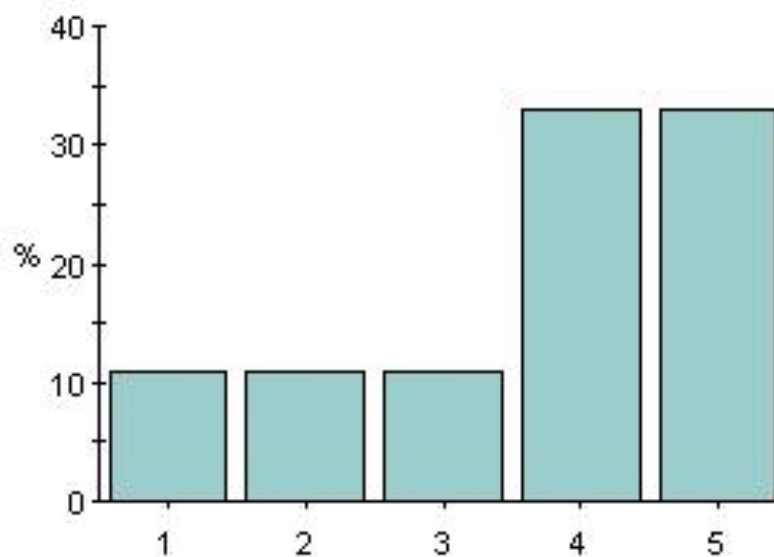


	%	#
1	11.1%	1
2	11.1%	1
3	11.1%	1
4	33.3%	3
5	33.3%	3
Total	100%	9
Mean		3.7

Feedback obtained after the July 2006 workshop - policy

- Policy: About which topics would you like to learn more to support your professional work?

Economic instrument theory

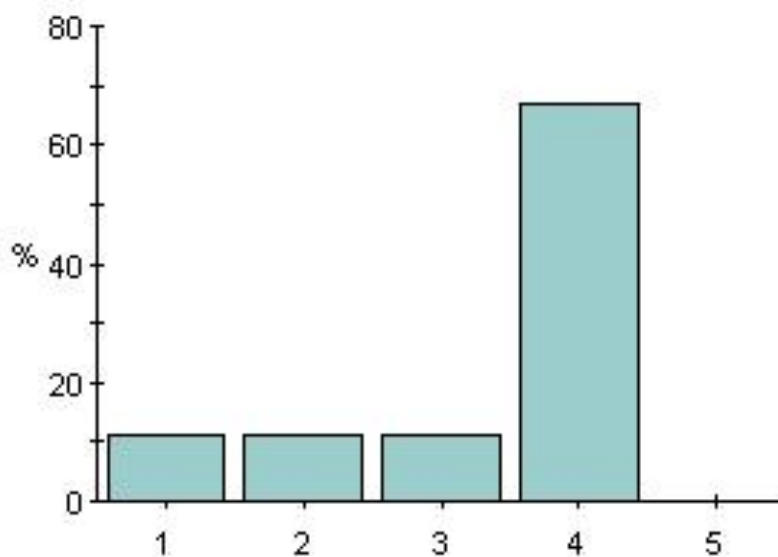


	%	#
1	11.1%	1
2	11.1%	1
3	11.1%	1
4	33.3%	3
5	33.3%	3
Total	100%	9
Mean		3.7

Feedback obtained after the July 2006 workshop - policy

- Policy: About which topics would you like to learn more to support your professional work?

Infrastructure and public services theoretical aspects



	%	#
1	11.1%	1
2	11.1%	1
3	11.1%	1
4	66.7%	6
5	0%	0
Total	100%	9
Mean		3.3

Progress

- **Policy Case Book**
- **Scenarios Manual**

Training Activities Today & Tomorrow

- Policy Evaluation Exercise
 - Introduction to exercise
 - Breakout groups (until 3pm today)

- Revisiting Models and Tools for Scenario Development

- Exploration exercise with baseline and alternative policy scenarios
 - (until lunchtime tomorrow)

Contacts & info

- Philip Peck
philip.peck@iiiee.lu.se
- Lars Strupeit
lars.strupeit@iiiee.lu.se